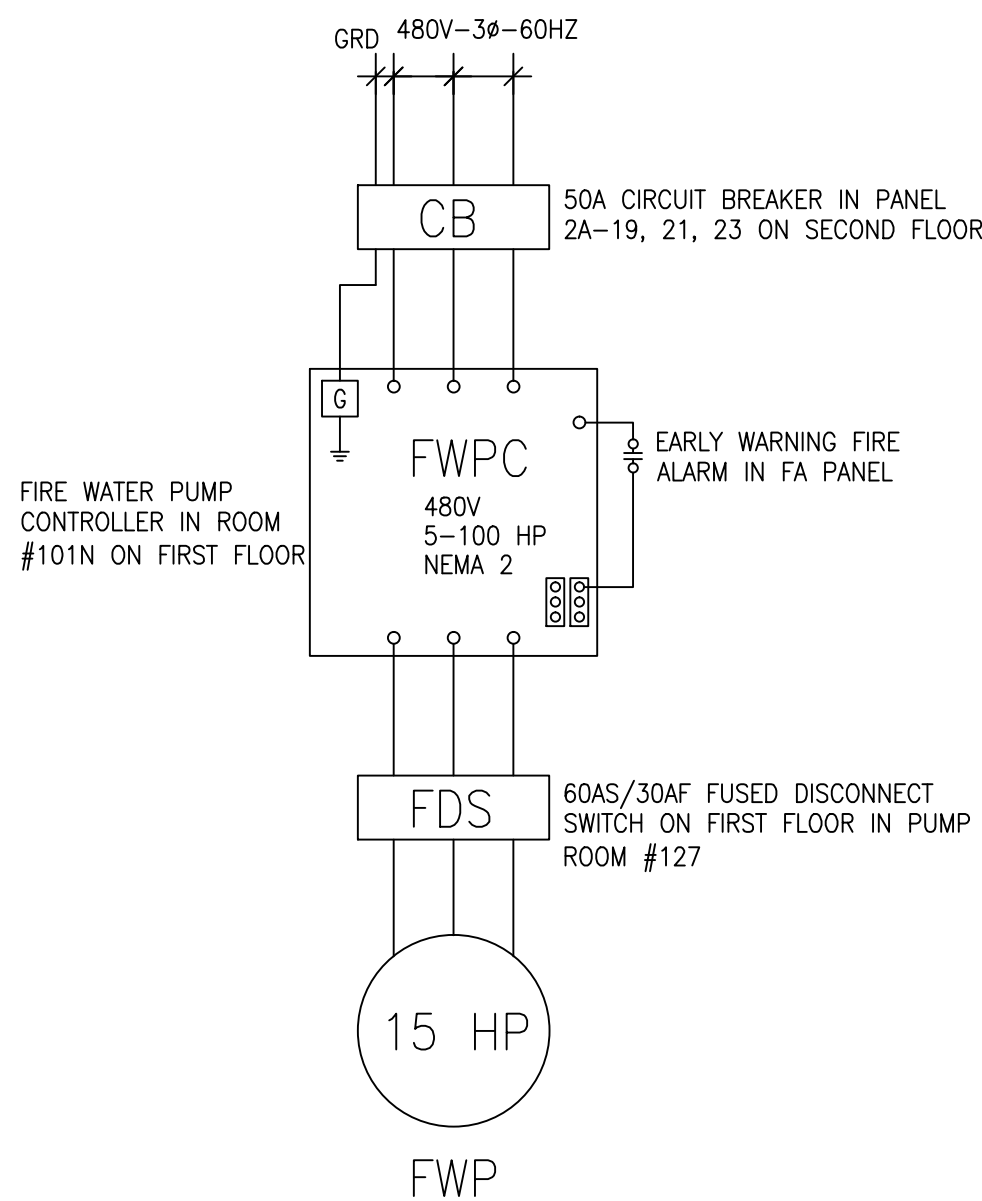


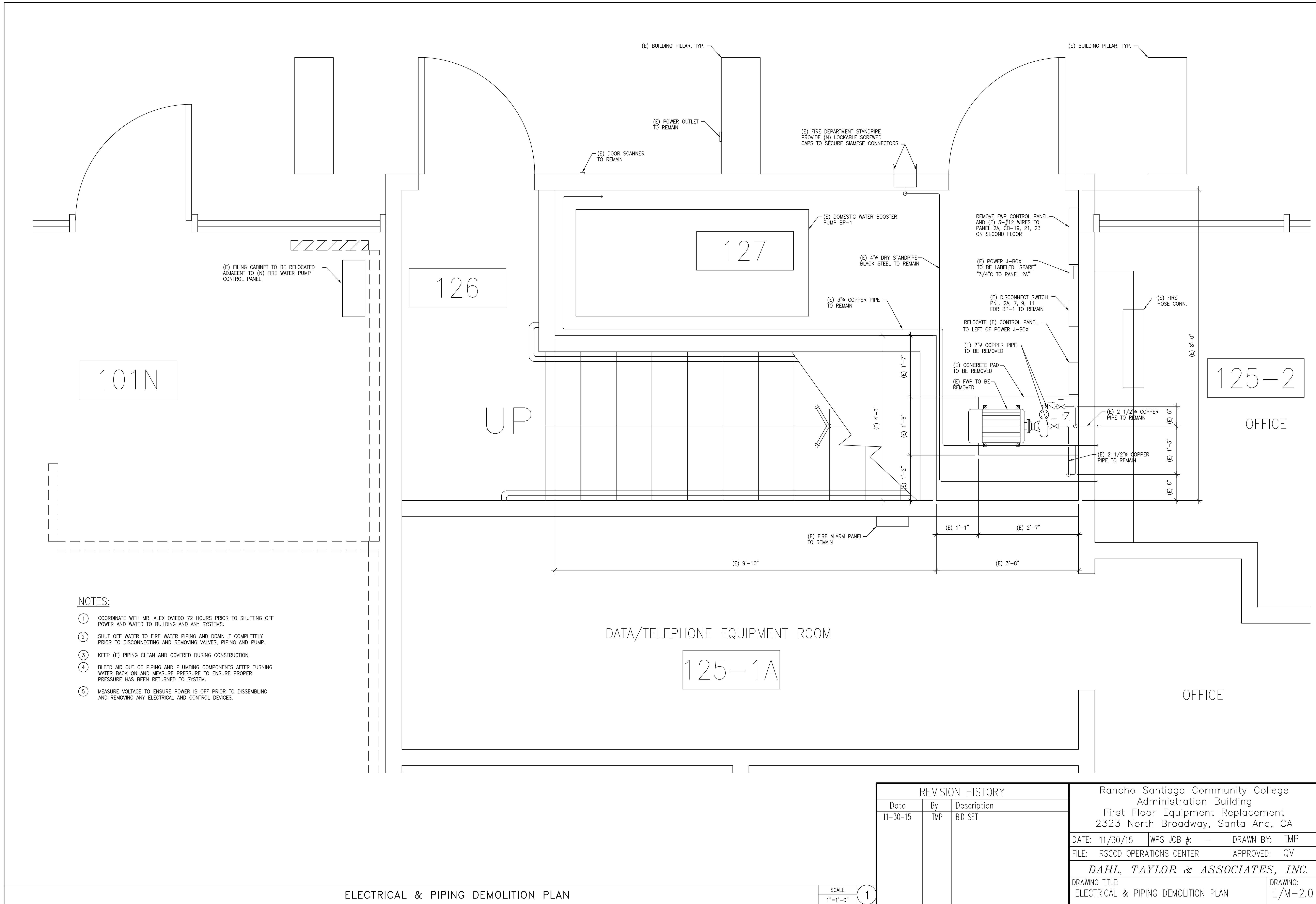
NOTES:

- 1 REMOVE (E) 20A CBs IN PANEL 2A AND WIRING TO (E) FWP ON FIRST FLOOR. INSTALL (N) 50A CBs, 1" 3#8 & 1#8 GRD TO (N) FWP CONTROL PANEL ON FIRST FLOOR. VERIFY CONDUIT ROUTING IN BUILDING.
- 2 INSTALL (N) 3/4"-3#14 WIRES TO (E) FIRE ALARM PANEL IN ROOM 125-1A. A C-16 LICENSED & CERTIFIED CONTRACTOR SHALL TERMINATE CONTROL WIRES IN (E) FIRE ALARM PANEL TO:
A. START UP (N) FIRE WATER PUMP (FWP) UPON AN EARLY WARNING FIRE ALARM.
B. STOP (N) FWP UPON A RESET OF THE FIRE ALARM.
- 3 FIRE WATER PUMP CONTROLLER (FWPC) EATON LMR PLUS ELECTRIC FIRE PUMP CONTROLLER FD-30 ACROSS-THE-LINE 480V, 5-100 HP, NEMA 2.
- 4 ALL CONDUITS SHALL BE INSTALLED INSIDE WALLS AND ABOVE CEILING. PATCH AND PAINT WALL AND CEILING TO MATCH EXISTING CONDITIONS.



WIRE DIAGRAM FOR FIRE WATER PUMP

REVISION HISTORY			Rancho Santiago Community College Administration Building First Floor Equipment Replacement 2323 North Broadway, Santa Ana, CA		
Date	By	Description			
11-30-15	TMP	BID SET	DATE: 11/30/15	WPS JOB #: -	DRAWN BY: TMP
			FILE: RSCCD OPERATIONS CENTER		APPROVED: QV
			DAHL, TAYLOR & ASSOCIATES, INC.		
			DRAWING TITLE: ELECTRICAL PARTIAL FIRST FLOOR PLAN		DRAWING: E-2.0



REVISION HISTORY			Rancho Santiago Community College Administration Building First Floor Equipment Replacement 2323 North Broadway, Santa Ana, CA		
Date	By	Description			
11-30-15	TMP	BID SET	DATE: 11/30/15	WPS JOB #: -	DRAWN BY: TMP
			FILE: RSCCD OPERATIONS CENTER		APPROVED: QV
			DAHL, TAYLOR & ASSOCIATES, INC.		
			DRAWING TITLE: ELECTRICAL & PIPING DEMOLITION PLAN		DRAWING: E/M-2.0

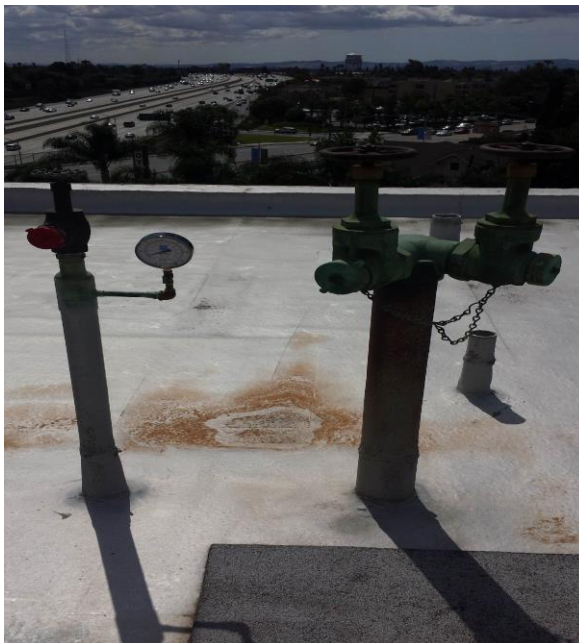


FIRE WATER PUMP SELECTION REPORT

Project #	1.15.02	Document # 1.15.02-2
Project Name:	Rancho Santiago Community College District – Operations Center	
Prepared By:	Quang Vu – Dahl, Taylor & Associates, Inc.	
Date:	Wednesday 5/27/2015	
Site Address:	2323 Broadway Street, Santa Ana, CA	
Attendees:	Alex Oviedo, RSCCD Quang Vu, P.E. - Mechanical and Electrical Engineer	

Equipment Requirements:

1. Class II Wet Standpipe System with fire hose cabinets (FHC) on each floor.
2. The existing wet standpipes had 10 psi on the gages at 2 locations on the roof. Hence, the city water pressure is approximately 25 to 35 psi.
3. NFPA Minimum Requirements – 100 GPM, 65 PSI at the furthest FHC, 1.5 inch connection.
4. New Fire Water Pump – Paco Model 10-25123, End Suction Centrifugal Pump Type L, 100 GPM, 155 Ft. of head (67 psi), 15 HP, 480 V-3ph-60Hz.
5. New FWP Controller – Eaton LMR PLUS Electric Fire Pump Controller
6. Electrical Requirements – 25 amp, 480 V, 3ph circuit breaker, 30 amp disconnect switch with 15 amp fuses, 1" C, 3 - #10 AWG, 1 - #10 AWG GRD THWN.



HEADQUARTERS:

2960 DAIMLER STREET, SANTA ANA, CA 92705 □ (949) 756-8654 □ Fax (949) 502-0777

SANTA ANA □ SAN DIEGO

WWW.DAHLTAYLOR.COM QVU@DAHLTAYLOR.COM

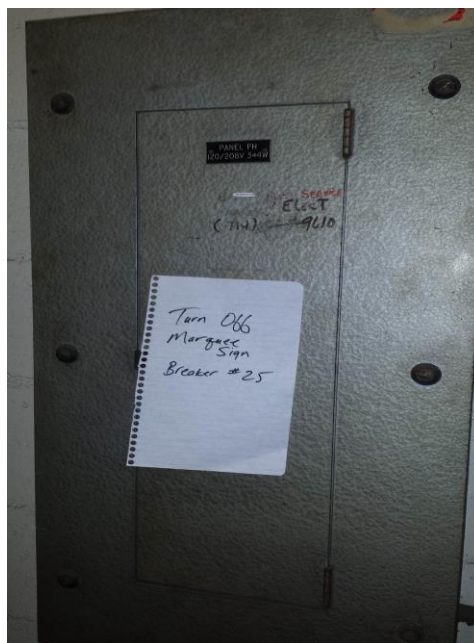


DAHL, TAYLOR & ASSOCIATES, INC.

ENGINEERS



DRY & WET STANDPIPES + FIRE HOSE CABINET ON ROOF



MAIN ELECTRICAL SWITCHBOARD & PANEL "PH" ON ROOF

END OF REPORT

HEADQUARTERS:
2960 DAIMLER STREET, SANTA ANA, CA 92705 □ (949) 756-8654 □ Fax (949) 502-0777

SANTA ANA □ SAN DIEGO

WWW.DAHLTAYLOR.COM QVU@DAHLTAYLOR.COM